

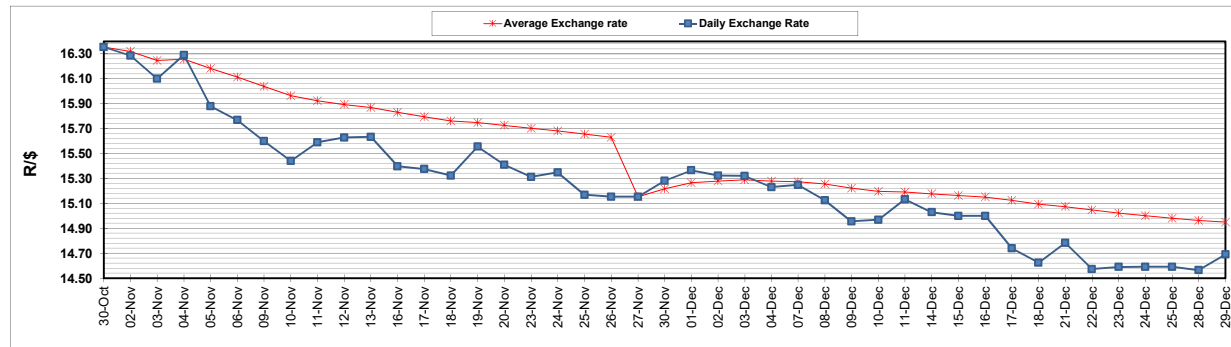
	PETROL 95 ULP	PETROL 93 ULP & LRP	DIESEL 0.05%	DIESEL 0.005%	ILL. PAR.
GAUTENG PUMP PRICE (SA c/l) AS FROM 02/12/2020	1,446.000	1,426.000	-	-	-
WHOLESALE PRICE (SA c/l) AS FROM 02/12/2020	-	-	1,245.420	1,247.820	684.688
SINGLE NATIONAL MAXIMUM RETAIL PRICE	-	-	-	-	856.000
BASIC FUEL PRICE - 29/12/2020 (SA c/l)	535.474	525.019	549.116	551.973	536.143
PRESS RELEASE CONTRIBUTION TO BFP 02/12/2020 - 29/12/2020 (SA c/l)	479.170	469.170	486.630	489.030	472.128
UNIT OVER/(UNDER) RECOVERY - 29/12/2020 (SA c/l)	(56.304)	(55.849)	(62.486)	(62.943)	(64.015)
AVERAGE BASIC FUEL PRICE 27/11/2020 - 29/12/2020	522.106	515.367	539.821	541.495	524.634
AVERAGE UNIT OVER/(UNDER) RECOVERY 27/11/2020 - 29/12/2020	(39.375)	(42.636)	(54.757)	(54.030)	(55.245)

ANALYSIS MOVEMENT OF AVERAGE OVER/(UNDER) RECOVERY

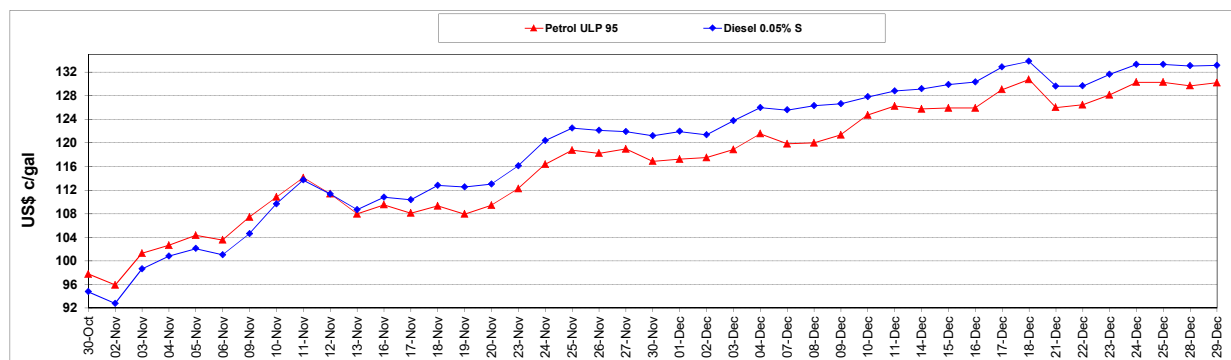
	PETROL 95	PETROL 93	DIESEL 0.05%	DIESEL 0.005%	ILL. PAR.
- MOVEMENT IN INTERNATIONAL PRODUCT PRICES	(63.082)	(66.037)	(79.267)	(78.617)	(79.067)
- MOVEMENT IN EXCHANGE RATE	23.707	23.401	24.511	24.587	23.822
AVERAGE UNIT OVER/(UNDER) RECOVERY 27/11/2020 - 29/12/2020	(39.375)	(42.636)	(54.757)	(54.030)	(55.245)

R/\$ EXCHANGE RATE - (R/\$14.6910 - 29/12/2020)

EXCHANGE RATE USED IN BASIC FUEL PRICE



INTERNATIONAL PRODUCT PRICES OF BASKET USED IN BASIC FUEL PRICE



BASIC FUEL PRICE IN SA CENTS PER LITRE

